

# Traffic Engineering Committee *Agenda*

1:30 p.m.  
Tuesday, September 4, 2012

---

## Agenda Items

1. Approval of minutes of the Traffic Engineering Committee meeting of August 7, 2012.
2. Review 2 hour parking sign located on a light pole at 1630 5<sup>th</sup> Avenue.
3. Salem Lutheran Church located at 1724 15<sup>th</sup> Street currently has parallel parking on 15<sup>th</sup> Street and is requesting diagonal parking.
4. Request to prohibit parking on the east side of 25<sup>th</sup> Street near the intersection of 7<sup>th</sup> Avenue.
5. Other.

1. Approval of minutes of the Traffic Engineering Committee Meeting of August 7, 2012.

---

2. Review 2 hour parking sign located on a light pole at 1630 5<sup>th</sup> Avenue.

**Explanation:** The “2 hour parking, 8 a.m. to 5 p.m.” located on a light pole in front of 1630 5<sup>th</sup> Avenue appears to be misleading since there is a fire hydrant next to the light pole. Parking tickets are being issued to cars that park in front of the hydrant since parking is prohibited at any curb within fifteen (15) feet of a fire hydrant.

---

3. Salem Lutheran Church located at 1724 15<sup>th</sup> Street currently has parallel parking on 15<sup>th</sup> Street and is requesting diagonal parking.

**Explanation:** Salem Lutheran Church located at 1724 15<sup>th</sup> Street currently has parallel parking on 15<sup>th</sup> Street and is requesting 17 spaces of diagonal parking on 15<sup>th</sup> Street which will straddle right of way and the property line.

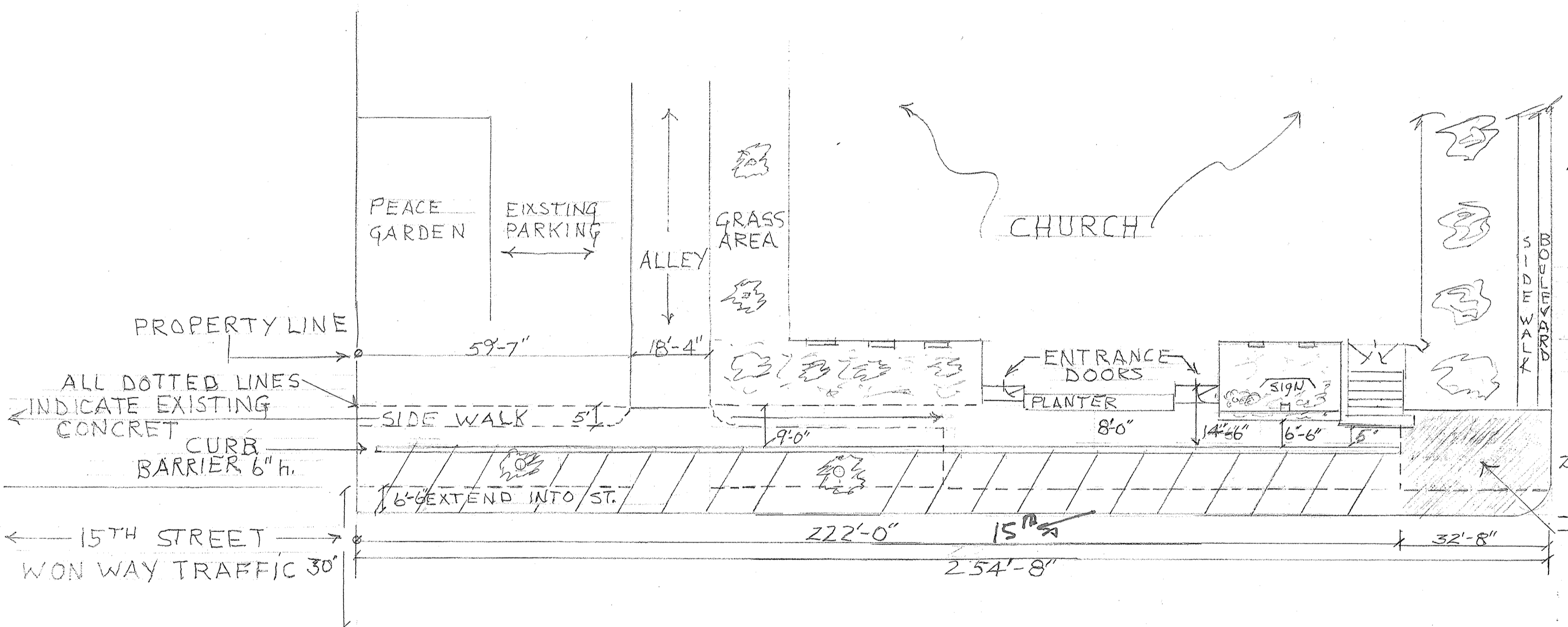
---

4. Request to prohibit parking on the east side of 25<sup>th</sup> Street near the intersection of 7<sup>th</sup> Avenue.

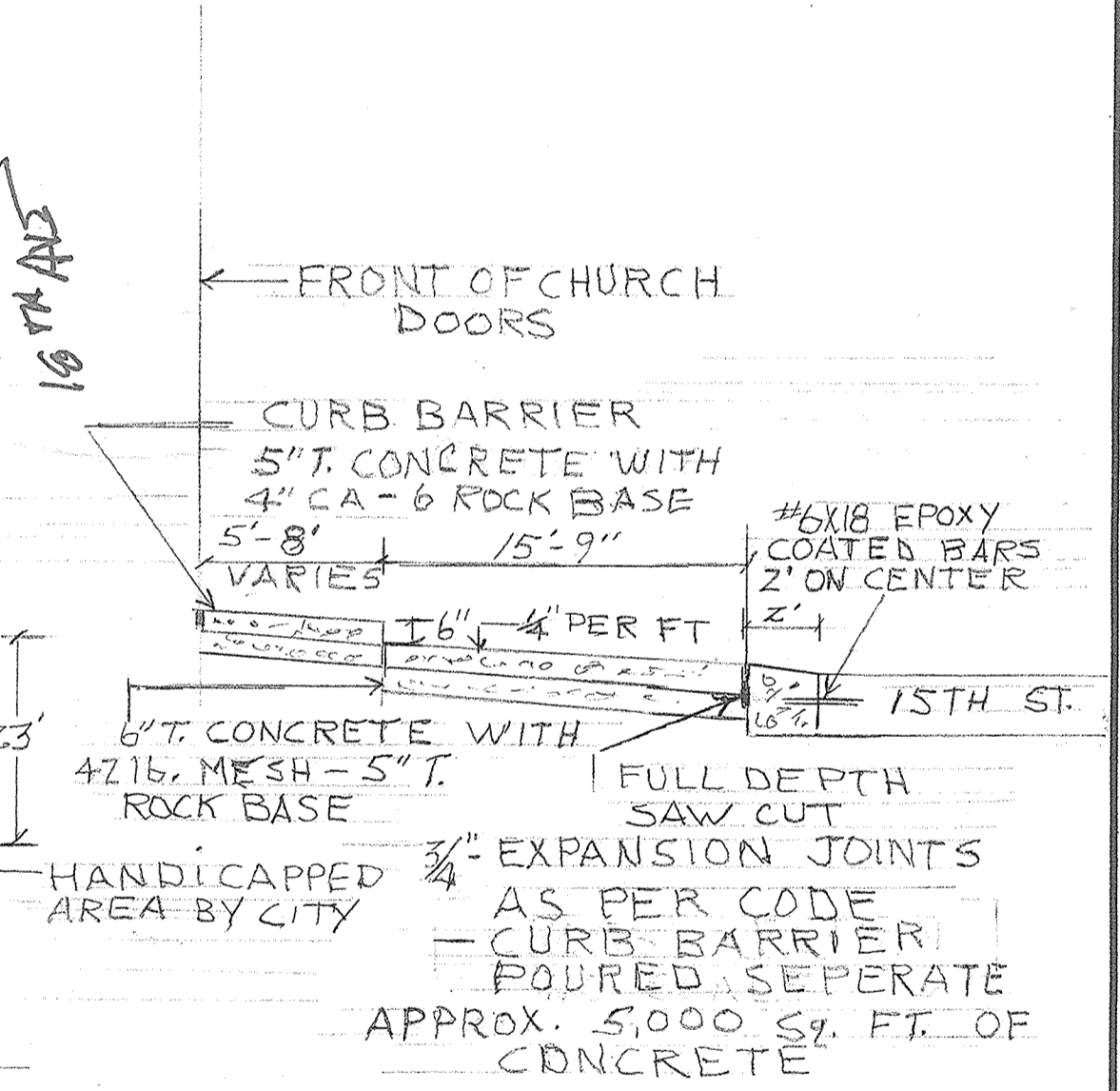
**Explanation:** Vehicles that are parked on 25<sup>th</sup> Street create a line of sight problem for westbound traffic on 7<sup>th</sup> Avenue turning onto 25<sup>th</sup> Street.

---

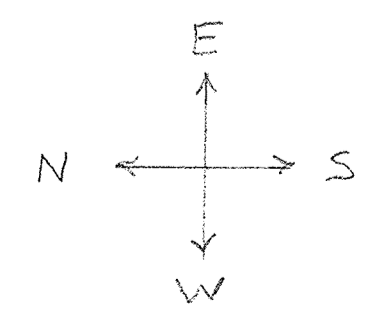
5. Other.



NEW DIAGONAL PARKING  
17 SPACES 60° ANGLE  
FRONT GROUND PLAN  
SCALE 1" = 20'



CROSS SECTION  
NO SCALE



SALEM LUTHERAN CHURCH 1724 15TH ST. MOLINE ILL.		
SCALE: 1" = 20'	APPROVED BY	DRAWN BY
DATE: AUG 20/12		LARRY DUTIVEY
VARIANCE TO EXTEND EXISTING CURB 6'-6" INTO 15TH ST.		
REQUEST TO CLOSE ALLEY	DRAWING NUMBER	
	1 of 1	